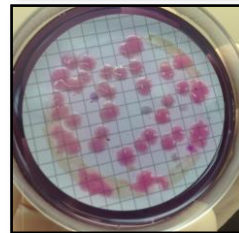


Spatial Distribution and Effects of Sewage on Puakō's Coral Reefs

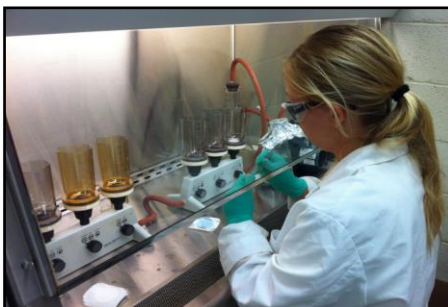
Goals

- Use chemical and biological tools to determine if sewage is entering coastal waters
- Determine if sewage is impacting water quality
- Assess coral reef community-level response to sewage



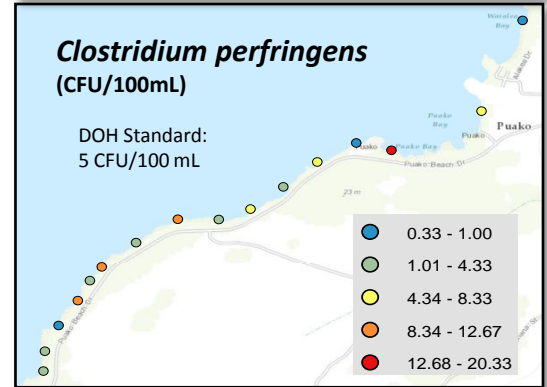
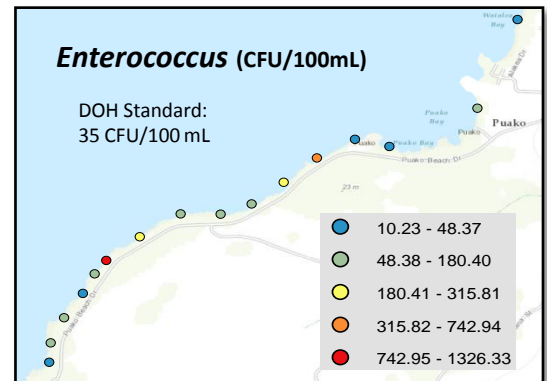
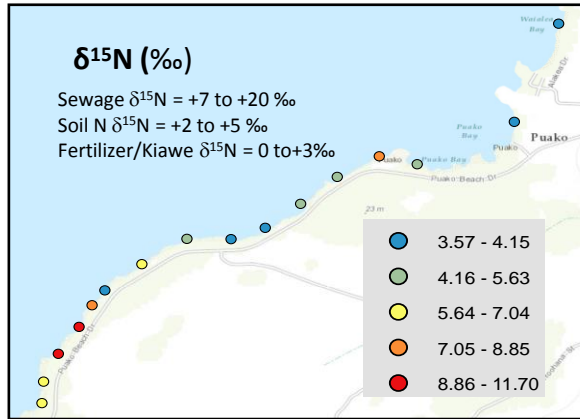
Objectives

1. Dye Tracer Studies: Use dye to document connection between cesspools and ocean
2. $\delta^{15}\text{N}$ Seaweed Measurements: Evaluate presence and spatial extent of sewage near- and offshore
3. Fecal Indicator Bacteria & Nutrient Measurements: Determine if DOH water quality standards are exceeded
4. Benthic Community Responses: Assess responses of corals, fishes, and macroinvertebrates to wastewater



Findings

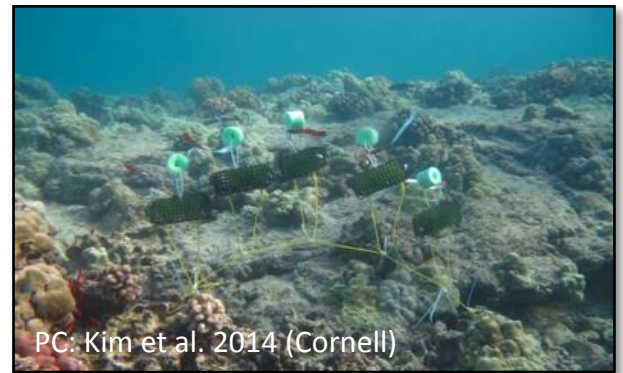
Dye travel time was 3 days from cesspool to ocean, only observed at low tide and localized



Fecal indicator bacteria (*Enterococcus* & *C. perfringens*) and $\delta^{15}\text{N}$ seaweed values indicate sewage presence at multiple locations

Remaining Work

- Two more dye tracer experiments
- Nutrient, bacteria, and $\delta^{15}\text{N}$ seaweed measurements including offshore seaweed cage experiments
- Coral and fish sampling



PC: Kim et al. 2014 (Cornell)

Seaweed cage experiments

UHH Faculty

Dr. Tracy Wiegner (PI, water quality) wiegner@hawaii.edu
 Dr. Jim Beets (Coral & fish) beets@hawaii.edu
 Dr. Steve Colbert (Dye studies) colberts@hawaii.edu
 Dr. Jason Adolf jadolf@hawaii.edu

Technician:

Kaile'a Carlson kaileac@hawaii.edu

Graduate Student (supported by PCA):

Leilani Abaya labaya@hawaii.edu

Undergraduates:

Carrie Soo Hoo, Cherie Kauahi, Serina Ki'ili, Ricky Tabandera, Maile Aiwohi, Evelyn Braun



200 West Kawili St
 Hilo, HI 96720

Funded by NOAA Coral Reef Conservation Program and Puako Community Association

